



# 2019 CUB SCOUT SUMMER CAMP

## CT RIVERS COUNCIL

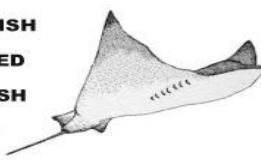
### "UNDER THE SEA"



#### Ocean Animal Word Search

S L S E Y S S S X V Z E E C Q  
M E B U Q N T H J H S N R Z R  
C E E U P I S A Y A E O N J S  
S S I R N O B R L I S M N R T  
J D E G O Z T K J C Y E L I A  
G E R M A L C C Y T B N B D R  
M A L N I H P L O D X A E R F  
Y V S L O B S T E R T E R T I  
X U D B Y Y C F E Y W G M C S  
P W F Z Y F J N L A O U U P H  
U N H Q W L I B E R H B B M L  
Y L J A D E F S Z Y F Y I G F  
J F M G L C L M H F V Z F K M  
P T W B J E N T D B Q X H A T  
S W O R D F I S H U D C W Q C

- |          |           |           |
|----------|-----------|-----------|
| ANEMONE  | CLAM      | CRAB      |
| DOLPHIN  | EEL       | JELLYFISH |
| LOBSTER  | OCTOPUS   | SEAWEED   |
| SHARK    | SQUID     | STARFISH  |
| STINGRAY | SWORDFISH | WHALE     |



Don't Miss Out On The Fun!

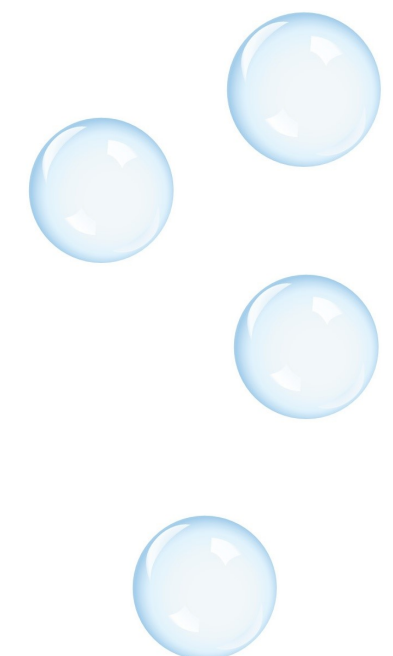
#### RESIDENT CAMP

**Family Camp**  
Camp Workcoeman, New Hartford  
July 6-7  
Camp Mattatuck, Plymouth  
Hartford  
July 20-21  
June Norcross Webster  
Scout Reservation Ashford  
July 6-7

**Mini-Week**  
Camp Mattatuck, Plymouth  
July 7-10, July 21-24  
Camp Workcoeman, New Hartford  
June 30- July 3, August 4-7  
Cub Country, Ashford  
August 4-7, August 11-14

**Full Week**  
Camp Mattatuck, Plymouth  
July 7-12, July 14-19, July 21-26  
Camp Workcoeman, New  
August 4-9  
Cub Country, Ashford  
August 4-9, August 11-16

**Webelos Only Week**  
Camp Workcoeman, New Hartford  
June 30-July 5  
J.N. Webster, Ashford  
August 11-16

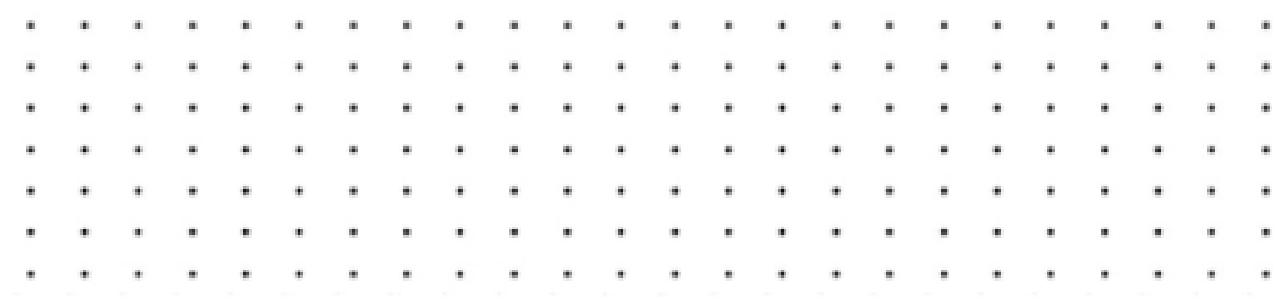


#### DAY CAMP

Camp Mattatuck, Plymouth, CT  
July 15-19, July 22-26  
Camp Pequot, Mashantucket  
July 15-19  
Cub Country, Ashford  
July 22-26  
Camp Suffield  
August 5-9  
Camp Workcoeman, New Hartford  
August 12-16  
STEMology Day Camp, Manchester  
August 12-16  
Camp Ingersoll, Portland  
August 19-23

#### DOTS & BOXES

Players take turns joining two horizontally or vertically adjacent dots by a line. A player that completes the fourth side of a square (box) initials that box and must play again. When all boxes have been initialed the ends and the player with the most initialed boxes wins.



For More Information & To Register: <https://www.ctrivers.org/camping/cub-scout-camping>